

# Understanding the Registry

## Uploading your Photo or Residence from a Desktop/Laptop Computer

The information below shows you how to upload a document from your laptop or desktop computer to the Medical Marijuana Use Registry.

**Step 1:** Log into the Medical Marijuana Use Registry at <https://mmuregistry.flhealth.gov/>.

If you do not remember your password, you may reset it yourself by selecting [Forgot Password](#) on the Login page. For step-by-step instructions to reset your password, see our [Resetting My Password](#) guide on our Know the Facts MMJ page (<https://knowthefactsmmj.com/registry/#instructional-guides>).

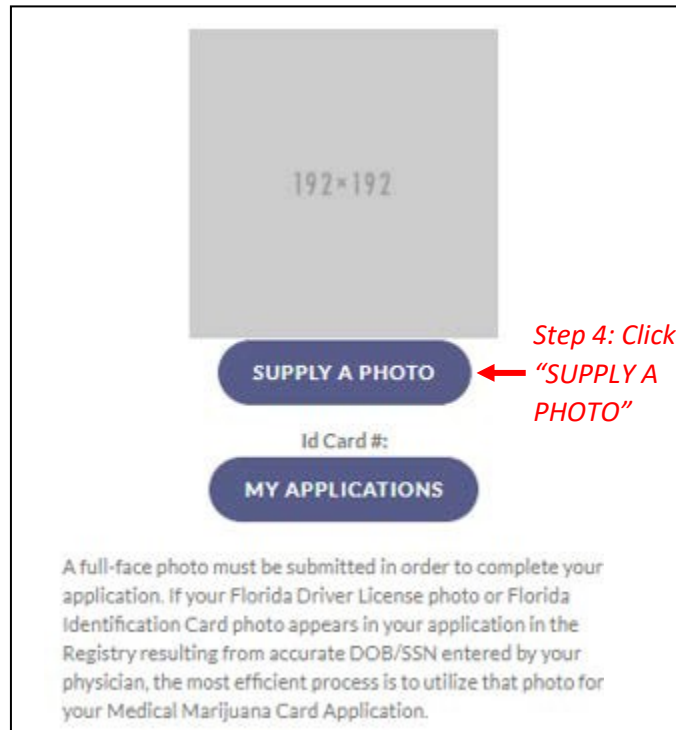
**Step 2:** Navigate to the “Your Card” menu option at the top of the page to view your identification card application.



**Step 3:** Click “View” on the application that requires the documents to be uploaded (look for yellow question mark(s)).

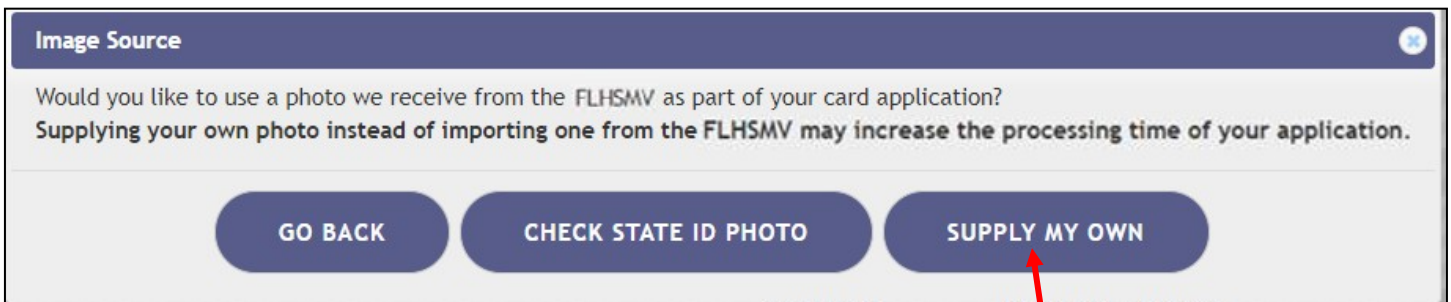


**Step 4:** Once you are on the application page, you will need to supply a headshot photo. Click “Supply A Photo” to either obtain your Florida Driver’s License or Florida identification (ID) card headshot photo or supply your own photo.



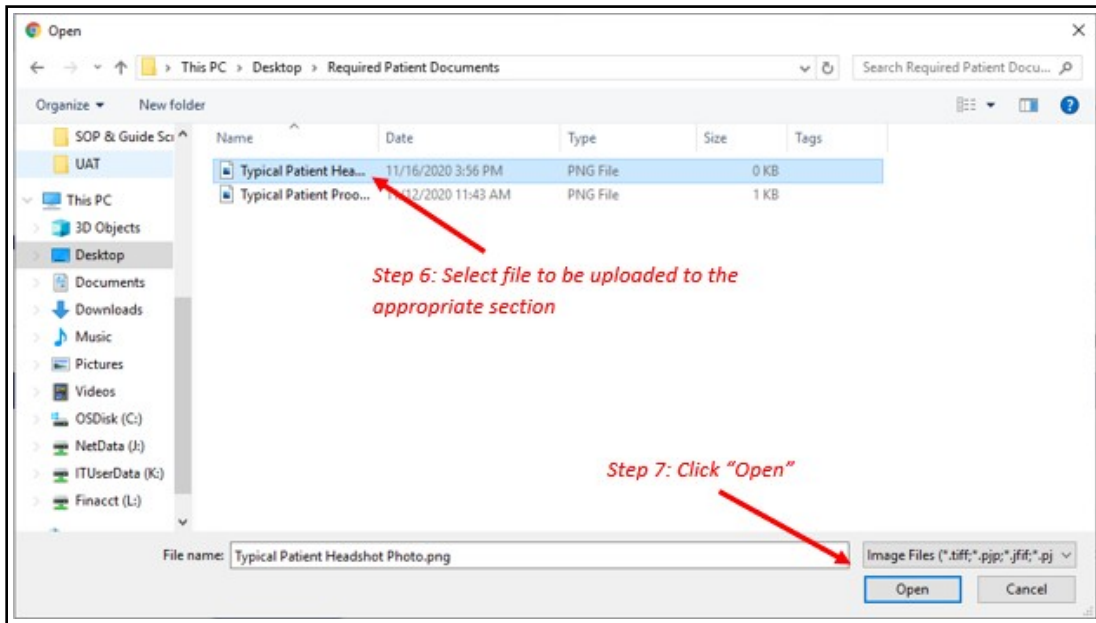
**Step 5:** Clicking “Check My State ID” will upload your driver’s license photo from the Florida Department of Highway Safety and Motor Vehicles’ (FLHSMV) demographic database. Click “Supply my Own” to upload your own passport-style photo. File Explorer will open for you to locate the file you wish to upload.

*(Using the FLHSMV sourced data will automatically approve the photo and may cut down on processing time, while supplying your own photo may increase the processing time).*

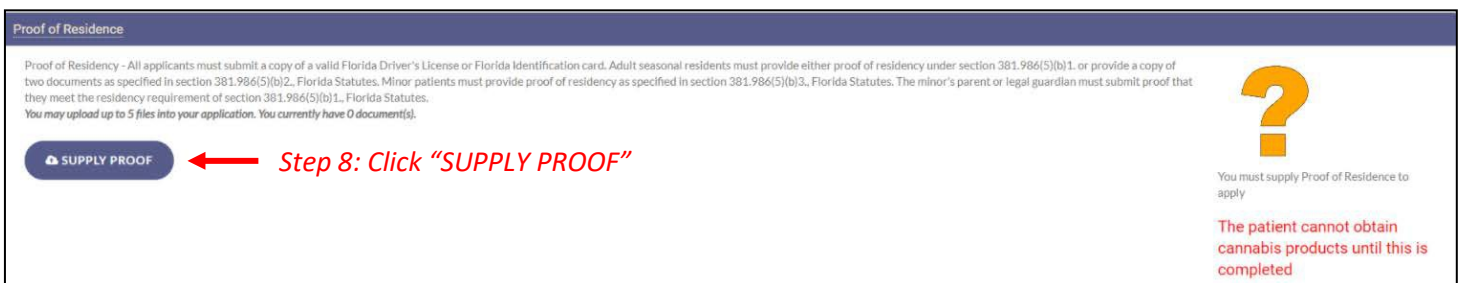


**Step 6:** Navigate to the location on your desktop/laptop computer that has the file you wish to upload. Select the file to be uploaded.

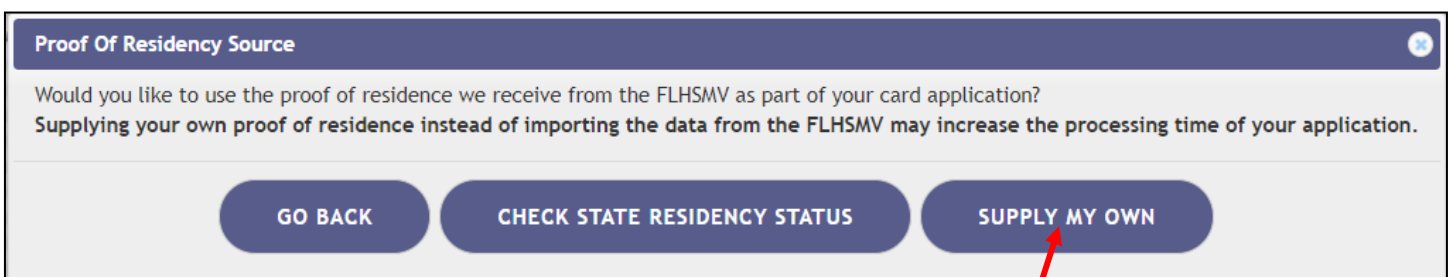
**Step 7:** Click “Open.”



**Step 8:** After supplying your own photo, you are redirected back to the application page. Scroll down to the “Proof of Residence” field and click “Supply Proof.”



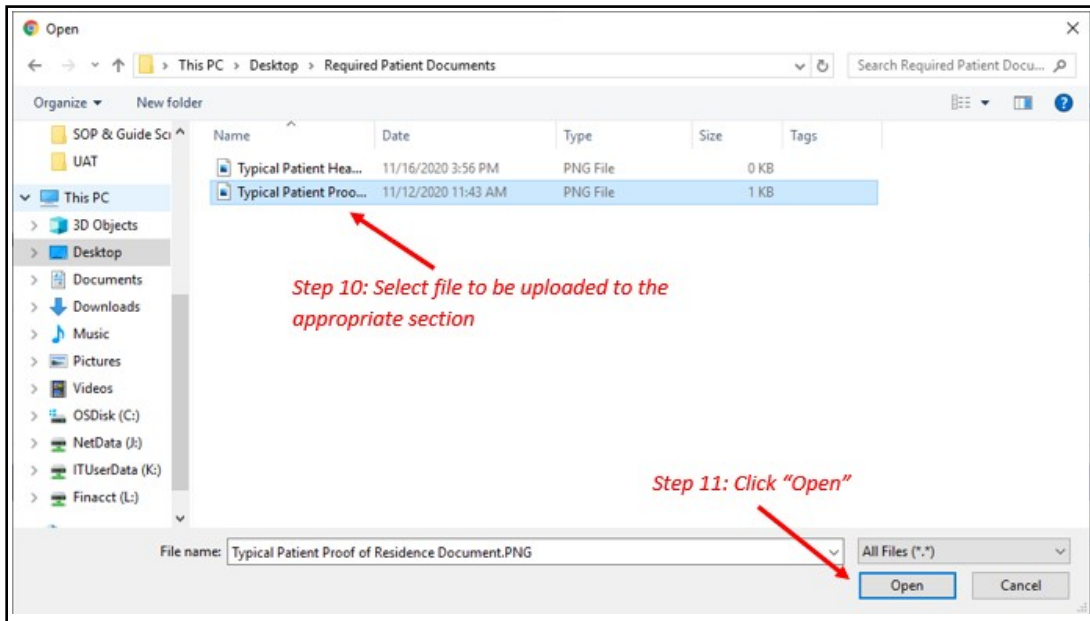
**Step 9:** A prompt will appear for you to either check FLHSMV for your State Residency status, or to supply your own. Click “Supply My Own.” The File Explorer will open for you to locate the file you wish to upload.



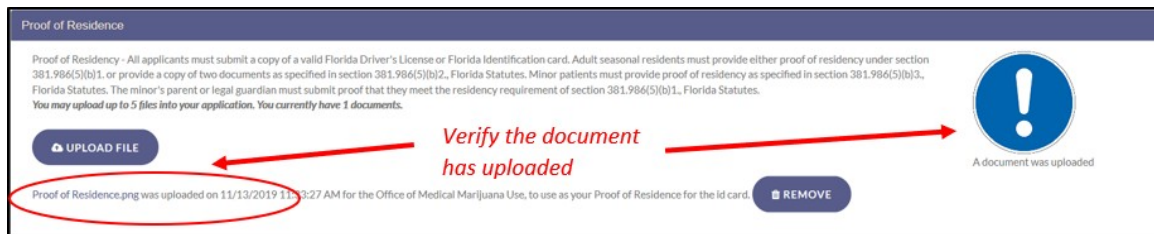
Step 9: Click “SUPPLY MY OWN”

**Step 10:** Navigate to the location on your desktop/laptop computer that has the file you wish to upload. Select the file to be uploaded.

**Step 11:** Click “Open.”



You will be redirected back to your online application where you can verify that your document was successfully uploaded.



You can check the status of your application as it is being reviewed. To learn what each status icon stands for, please see our [Understanding My Application Status](https://knowthefactsmmj.com/registry/#instructional-guides) guide on our Know the Facts MMJ website (<https://knowthefactsmmj.com/registry/#instructional-guides>).

Once your Identification Card application has been approved, you will then be able to contact one of the [licensed medical marijuana treatment centers](https://knowthefactsmmj.com/mmtc) to fill an order. A complete list of licensed treatment centers can be found on our Know the Facts MMJ website (<https://knowthefactsmmj.com/mmtc>).

For additional information, visit  
**KnowTheFactsMMJ.com**